

## ANURANG<sup>®</sup> Fast Red R 020

### PRODUCTION INFORMATION

**ANURANG<sup>®</sup> Fast Red R 020** is Yellowish shade Mono Azo pigment especially designed for decorative paints.

### PRODUCT INFORMATION



<b>Chemical Type</b>	Mono Azo Red
<b>C.I.Name</b>	Pigment Red 2
<b>C.I. No</b>	12310
<b>CAS NO</b>	6041-94-7
<b>EINECS /ELINCS No</b>	227-930-1
<b>PHYSICAL FORM</b>	Free Flowing Powder

### APPLICATION PROFILE

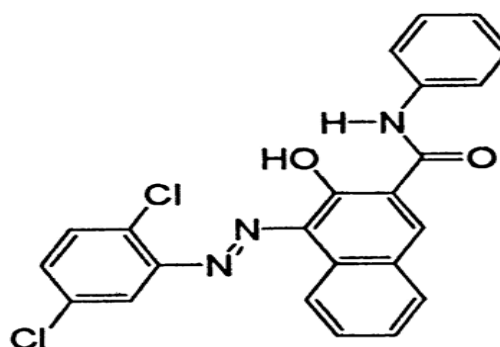
Water borne Paints	Recommended
Air Drying Alkyds	Recommended
Aqueous Pigment Emulsion	Recommended
Stoving Enamels	-
Powder Coating	-
Industrial Coating	-
Coil Coating	-

### COLOUR ESTIMATES / FASTNESS PROPERTIES

### TECHNICAL DATA

FULL TONE (0.2 % )		Reduction Tone ( 1: 20)	
			
L	40.71	L	63.98
C	56.70	C	34.78
H	28.00	H	350.15
a	50.07	a	34.26
b	26.62	b	-5.95
Light Fastness	5-6	Light Fastness	3-4
Weather Fastness	3-4	Weather Fastness	2-3

### CHEMICAL STRUCTURE



### PHYSICAL DATA

Oil Absorption	gm/100gm	40.0-55.0
Bulk Density	Kg/Lt	0.30-0.40
Specific Gravity	Gm/cm <sup>3</sup>	1.40-1.60
pH	Number	6.00-8.00

### SOLVENT RESISTANCE (On 1-5 Grey wool scale)

Water	Alkali	Acid	Ethyl Acetate	Xylene	MEK	IPA
5	4	5	3	1	3	3

### STANDARD PACKAGING

20 Kg HDPE Bag      42"x42" inch Wooden pallet contains 300 Kg Material.

**DISCLAIMER:** The colour panels and other information provided in the shade card is given in good faith and is to be used as a guide only. Verification under actual conditions is recommended before use.