

ANUCOLOR[®] Fast Red R- 1703

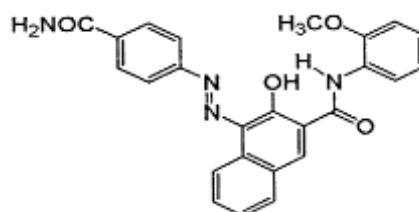
PRODUCTION INFORMATION

ANUCOLOR[®] Fast Red R-1703 is Yellowish shade mid high Performance Mono Azo pigment especially designed for all type of the printing ink segment

PRODUCT INFORMATION

Chemical Type	Mono Azo Naphthol Red
C.I.Name	PR 170
C.I. No	12475
CAS NO	2786-76-7
EINECS /ELINCS No	220-509-3
PHYSICAL FORM	Free Flowing Powder

CHEMICAL STRUCTURE



COLOURESTICES / FASTNESS PROPERTIES

TECHNICAL DATA and APPLICATION

FULL TONE (0.2 %)		Reduction Tone (1: 20)	
			
L	42.15	L	69.98
C	61.95	C	32.59
H	31.1	H	07.59
a	53.53	a	32.52
b	30.13	b	04.54
Light Fastness	5-6	Light Fastness	4-5
Weather Fastness	3-4	Weather Fastness	2-3

APPLICATION

Aqueous Liquid Ink	Recommended
Solvent Liquid Inks	Recommended
Offset Printing Inks	Recommended

PHYSICAL DATA

Oil Absorption	gm/100gm	40.0-50.0
Bulk Density	Kg/Lt	0.30-0.45
Specific Gravity	Gm/cm ³	1.20-1.60
pH	Number	6.00-8.00

HEATING STABILITY

Temperature	Duration	Suitability
150°C.	20 Min	SB

SOLVENT RESISTANCE (On 1-5 Grey wool scale)

Water	Alkali	Acid	Ethyl Acetate	Xylene	MEK	IPA
5	5	5	2	4	3	4

STANDARD PACKAGING

20 Kg Plastic Bag	42"x42" inch Wooden pallet contains 300 Kg Material.
-------------------	--

DISCLAIMER: The colour panels and other information provided in the shade card are given in good faith and are to be used as a guide only. Verification under actual conditions is recommended before use.