

## ANUCOLOR<sup>®</sup> Fast Red R- 2105

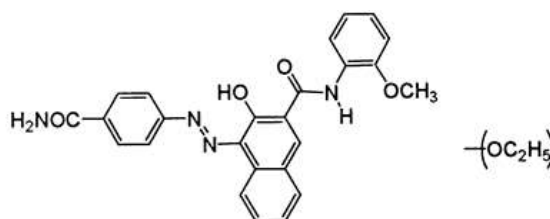
### PRODUCTION INFORMATION

**ANUCOLOR<sup>®</sup> Fast Red R 2105** is Bluish shade mid high Performance Mono Azo pigment especially designed for all type of the printing ink application.

### PRODUCT INFORMATION

<b>Chemical Type</b>	Mono Azo Naphthol Red
<b>C.I.Name</b>	PR 210
<b>C.I. No</b>	12477
<b>CAS NO</b>	61932-63-6
<b>EINECS /ELINCS No</b>	220-509-3
<b>PHYSICAL FORM</b>	Free Flowing Powder

### CHEMICAL STRUCTURE



### COLOURESTICES / FASTNESS PROPERTIES

### TECHNICAL DATA and APPLICATION

FULL TONE (0.2 % )		Reduction Tone ( 1: 20)	
			
L	43.43	L	69.64
C	62.95	C	32.81
H	31.30	H	8.15
a	5464	a	33.69
b	30.15	b	04.89
Light Fastness	5-6	Light Fastness	4-5
Weather Fastness	3-4	Weather Fastness	2-3

### APPLICATION

Aqueous Liquid Ink	Recommended
Solvent Liquid Inks	Recommended
Offset Printing Inks	Recommended

### PHYSICAL DATA

Oil Absorption	gm/100gm	40.0-50.0
Bulk Density	Kg/Lt	0.30-0.45
Specific Gravity	Gm/cm <sup>3</sup>	1.30-1.70
pH	Number	6.00-8.00

### HEATING STABILITY

Temperature	Duration	Suitability
150°C.	20 Min	SB

### SOLVENT RESISTANCE (On 1-5 Grey wool scale)

Water	Alkali	Acid	Ethyl Acetate	Xylene	MEK	IPA
5	5	5	2	4	3	4

### STANDARD PACKAGING

20 Kg Plastic Bag	42"x42" inch Wooden pallet contains 300 Kg Material.
-------------------	--

**DISCLAIMER:** The colour panels and other information provided in the shade card are given in good faith and are to be used as a guide only. Verification under actual conditions is recommended before use.