

ANUCOLOR[®] Fast Yellow Y-124

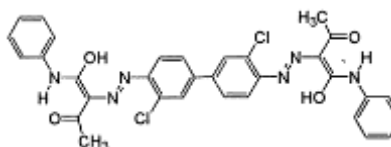
PRODUCTION INFORMATION

ANUCOLOR[®] Fast Yellow Y 124 is medium shade di arylide pigment offering more transparent and tinting strength as compared to other grade of same pigment class. This product is especially designed for off set printing ink application..

PRODUCT INFORMATION



| | |
|--------------------------|---------------------|
| Chemical Type | Dis Azo Yellow |
| C.I.Name | PY 12 |
| C.I. No | 21090 |
| CAS NO | 6358-85-6 |
| EINECS /ELINCS No | 228-787-8 |
| PHYSICAL FORM | Free Flowing Powder |

CHEMICAL STRUCTURE



COLOURESTICES / FASTNESS PROPERTIES

TECHNICAL DATA and APPLICATION

| FULL TONE (0.2 %) | | Reduction Tone (1: 20) | |
|--|-------|---|-------|
|  | |  | |
| L | 82.29 | L | 90.87 |
| C | 90.57 | C | 50.63 |
| H | 85.63 | H | 91.82 |
| a | 10.15 | a | -0.29 |
| b | 90.05 | b | 40.40 |
| Light Fastness | 4-5 | Light Fastness | 3-4 |
| Weather Fastness | 2-3 | Weather Fastness | 1-2 |

APPLICATION

| | |
|----------------------|-------------|
| Aqueous Liquid Ink | - |
| Solvent Liquid Inks | - |
| Offset Printing Inks | Recommended |

PHYSICAL DATA

| | | |
|------------------|--------------------|------------|
| Oil Absorption | gm/100gm | 40.0-55.0 |
| Bulk Density | Kg/Lt | 0.30-0.40 |
| Specific Gravity | Gm/cm ³ | 1.20- 1.40 |
| pH | Number | 6.00-8.00 |

HEATING STABILITY

| Temperature | Duration | Suitability |
|-------------|----------|-------------|
| 150°C. | 20 Min | SB |

SOLVENT RESISTANCE (On 1-5 Grey wool scale)

| | | | | | | |
|-------|--------|------|---------------|--------|-----|-----|
| Water | Alkali | Acid | Ethyl Acetate | Xylene | MEK | IPA |
| 5 | 5 | 5 | 3 | 3 | 3 | 4 |

STANDARD PACKAGING

| | |
|-------------------|--|
| 20 Kg Plastic Bag | 42"x42" inch Wooden pallet contains 260 Kg Material. |
|-------------------|--|

DISCLAIMER: The colour panels and other information provided in the shade card are given in good faith and are to be used as a guide only. Verification under actual conditions is recommended before use.