

ANUCOLOR[®] Lake Red C R 530

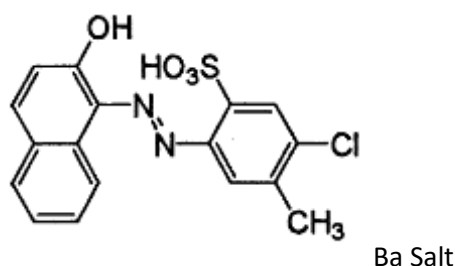
PRODUCTION INFORMATION

ANUCOLOR[®] Lake Red C R 530 is Mono Azo Lake Red pigment. It exhibits high colour strength, gloss and good solvent resistance properties.

PRODUCT INFORMATION



Chemical Type	Mono Azo Naphthol Red
C.I.Name	PR53:1
C.I. No	15585:1
CAS NO	5160-02-01
EINECS /ELINCS No	225-935-3
PHYSICAL FORM	Free Flowing Powder

CHEMICAL STRUCTURE



COLOURESTICES / FASTNESS PROPERTIES

TECHNICAL DATA and APPLICATION

FULL TONE (0.2 %)		Reduction Tone (1: 20)	
			
L	37.89	L	62.58
C	37.80	C	53.96
H	34.89	H	24.19
a	31.99	a	48.91
b	21.49	b	22.15
Light Fastness	6-7	Light Fastness	1-2
Weather Fastness	2-3	Weather Fastness	2-3

APPLICATION

Aqueous Liquid Ink	Recommended
Solvent Liquid Ink	Recommended
Offset Printing Ink	Recommended

PHYSICAL DATA

Oil Absorption	gm/100gm	35.0-50.0
Bulk Density	Kg/Lt	0.30-0.40
Specific Gravity	Gm/cm ³	1.65-1.85
pH	Number	6.00-8.00

HEATING STABILITY

Temperature	Duration	Suitability
150°C.	20 Min	SB

SOLVENT RESISTANCE (On 1-5 Grey wool scale)

Water	Alkali	Acid	Ethyl Acetate	Xylene	MEK	IPA
5	5	5	3	3	3	4

STANDARD PACKAGING

20 Kg Plastic Bag	42"x42" inch Wooden pallet contains 300 Kg Material.
-------------------	--

DISCLAIMER: The colour panels and other information provided in the shade card are given in good faith and are to be used as a guide only. Verification under actual conditions is recommended before use.