

## ANUCOLOR<sup>®</sup> Lake Red C R 536

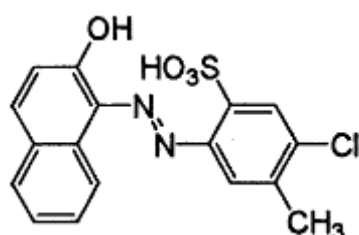
### PRODUCTION INFORMATION

**ANUCOLOR<sup>®</sup> Lake Red C R 536** is Mono Azo Lake Red pigment. Especially designed where Low Barium content requires. It exhibits high colour strength, gloss and good solvent resistance properties.

### PRODUCT INFORMATION

<b>Chemical Type</b>	Mono Azo Naphthol Red
<b>C.I.Name</b>	PR53:1
<b>C.I. No</b>	15585:1
<b>CAS NO</b>	5160-02-01
<b>EINECS /ELINCS No</b>	225-935-3
<b>PHYSICAL FORM</b>	Free Flowing Powder

### CHEMICAL STRUCTURE



Ba Salt

### COLOURESTICES / FASTNESS PROPERTIES

### TECHNICAL DATA and APPLICATION

FULL TONE (0.2 % )		Reduction Tone ( 1: 20)	
			
L	38.36	L	63.24
C	38.60	C	63.96
H	35.20	H	33.97
a	32.09	a	50.31
b	20.13	b	31.93
Light Fastness	6-7	Light Fastness	1-2
Weather Fastness	2-3	Weather Fastness	2-3

### APPLICATION

Aqueous Liquid Ink	Recommended
Solvent Liquid Ink	Recommended
Offset Printing Ink	Recommended

### PHYSICAL DATA

Oil Absorption	gm/100gm	35.0-50.0
Bulk Density	Kg/Lt	0.30 - 0.40
Specific Gravity	Gm/cm <sup>3</sup>	1.40 -1.60
pH	Number	6.00-8.00

### HEATING STABILITY

Temperature	Duration	Suitability
150°C.	20 Min	SB

### SOLVENT RESISTANCE (On 1-5 Grey wool scale)

Water	Alkali	Acid	Ethyl Acetate	Xylene	MEK	IPA
5	5	5	3	3	3	4

### STANDARD PACKAGING

20 Kg Plastic Bag	42"x42" inch Wooden pallet contains 300 Kg Material.
-------------------	--

**DISCLAIMER:** The colour panels and other information provided in the shade card are given in good faith and are to be used as a guide only. Verification under actual conditions is recommended before use.