

## ANURANG<sup>®</sup> Fast Red 2 B R482

### PRODUCTION INFORMATION

**ANURANG<sup>®</sup> Fast Red2B R 482** is Bluish shade Mono Azo / Lake pigment having calcium salt lake especially designed for powder coating along with solvent born paints.

### PRODUCT INFORMATION


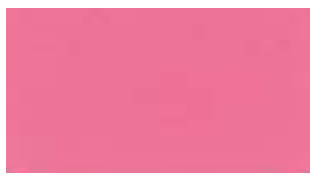
<b>Chemical Type</b>	Mono Azo Red 2 B
<b>C.I.Name</b>	Pigment Red 48.2
<b>C.I. No</b>	15865:2
<b>CAS NO</b>	7023-61-2
<b>EINECS /ELINCS No</b>	230-303-5
<b>PHYSICAL FORM</b>	Free Flowing Powder

### APPLICATION PROFILE

Water borne Paints	-
Air Drying Alkyds	Recommended
Aqueous Pigment Emulsion	-
Stoving Enamels	Recommended
Powder Coating	Recommended
Industrial Coating	-
Coil Coating	-

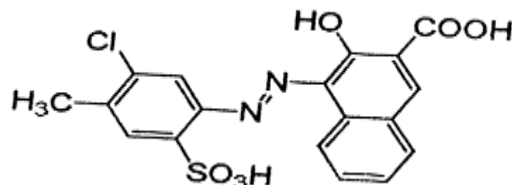
### COLOURESTICES / FASTNESS PROPERTIES

### TECHNICAL DATA

FULL TONE (0.2 % )		Reduction Tone ( 1: 20)	
			
L	35.68	L	56.36
C	35.99	C	47.44
H	28.35	H	2.29
a	31.67	a	47.40
b	17.09	b	1.93
Light Fastness	6-7	Light Fastness	6-7
Weather Fastness	3-4	Weather Fastness	2-3

### CHEMICAL STRUCTURE

Calcium Salt of -



### PHYSICAL DATA

Oil Absorption	gm/100gm	40.0-55.0
Bulk Density	Kg/Lt	0.45-0.55
Specific Gravity	Gm/cm <sup>3</sup>	1.60-1.80
pH	Number	6.00-8.00

### SOLVENT RESISTANCE (On 1-5 Grey wool scale)

Water	Alkali	Acid	Ethyl Acetate	Xylene	MEK	IPA
5	3	2	3	3	3	4

### STANDARD PACKAGING

20 Kg Plastic Bag	42"x42" inch Wooden pallet contains 400 Kg Material.
-------------------	--

**DISCLAIMER:** The colour panels and other information provided in the shade card is given in good faith and is to be used as a guide only. Verification under actual conditions is recommended before use.