



Ensuring Your Colour needs

# ANURANG<sup>®</sup> Fast Yellow Y138

## AZO PIGMENTS FOR PAINTS AND COATINGS

### PRODUCTION INFORMATION

**ANURANG<sup>®</sup> Fast Yellow Y 138** is medium shade di arylide pigment offering good opacity and tinting strength as compared to other di arylide yellows.

### PRODUCT INFORMATION



<b>Chemical Type</b>	Di Arylide Azo Yellow
<b>C.I.Name</b>	Pigment Yellow 13
<b>C.I. No</b>	21100
<b>CAS NO</b>	5102-83-0
<b>EINECS /ELINCS No</b>	225-822-9
<b>PHYSICAL FORM</b>	Free Flowing Powder

### APPLICATION PROFILE

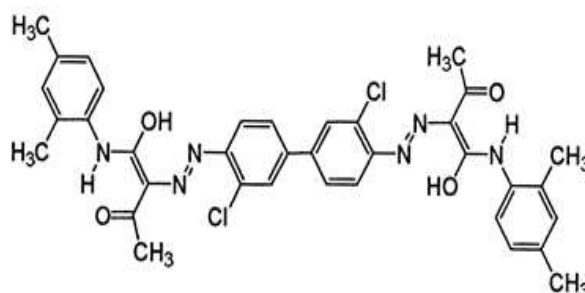
Water borne Paints	-
Air Drying Alkyds	-
Aqueous Pigment Emulsion	Recommended
Stoving Enamels	-
Powder Coating	-
Industrial Coating	-
Coil Coating	-

### COLOURESTICES / FASTNESS PROPERTIES

### TECHNICAL DATA

FULL TONE (0.2 % )		Reduction Tone ( 1: 20)	
			
L	85.59	L	93.39
C	92.92	C	52.29
H	83.39	H	88.97
a	21.02	a	-0.59
b	88.49	b	39.98
Light Fastness	6-7	Light Fastness	4-5
Weather Fastness	3-4	Weather Fastness	2-3

### CHEMICAL STRUCTURE



### PHYSICAL DATA

Oil Absorption	gm/100gm	40.0-55.0
Bulk Density	Kg/Lt	0.30-0.40
Specific Gravity	Gm/cm <sup>3</sup>	1.20-1.40
pH	Number	6.00-8.00

### SOLVENT RESISTANCE (On 1-5 Grey wool scale)

Water	Alkali	Acid	Ethyl Acetate	Xylene	MEK	IPA
5	4	4	5	4	5	3

### STANDARD PACKAGING

20 Kg Plastic Bag	42"x42" inch Wooden pallet contains 260 Kg Material.
-------------------	--

**DISCLAIMER:** The colour panels and other information provided in the shade card are given in good faith and are to be used as a guide only. Verification under actual conditions is recommended before use.