



Ensuring Your Colour needs

AZO PIGMENTS FOR PAINTS AND COATINGS

ANURANG[®] Fast Red R 1707

PRODUCTION INFORMATION

ANURANG[®] Fast Red R 1707 is Bluish shade mid high Performance Mono Azo pigment especially designed for universal paints.

PRODUCT INFORMATION

| | |
|--------------------------|-----------------------|
| Chemical Type | Mono Azo Naphthol Red |
| C.I.Name | Pigment Red 170 |
| C.I. No | 12475 |
| CAS NO | 2786-76-7 |
| EINECS /ELINCS No | 220-509-3 |
| PHYSICAL FORM | Free Flowing Powder |

APPLICATION PROFILE

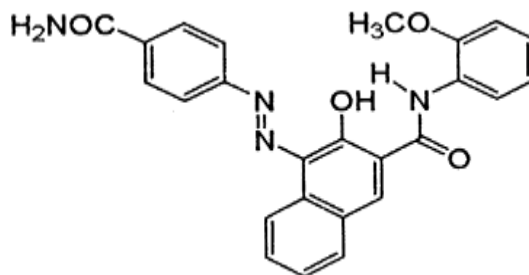
| | |
|--------------------------|-------------|
| Water borne Paints | Recommended |
| Air Drying Alkyds | Recommended |
| Aqueous Pigment Emulsion | Recommended |
| Stoving Enamels | Recommended |
| Powder Coating | Recommended |
| Industrial Coating | Recommended |
| Coil Coating | Recommended |

COLOURESTICES / FASTNESS PROPERTIES

TECHNICAL DATA

| FULL TONE (0.2 %) | | Reduction Tone (1: 20) | |
|--|--------|---|-------|
|  | |  | |
| L | 440.01 | L | 70.95 |
| C | 62.95 | C | 34.18 |
| H | 32.00 | H | 08.09 |
| a | 55.94 | a | 33.52 |
| b | 32.09 | b | 05.95 |
| Light Fastness | 5-6 | Light Fastness | 4-5 |
| Weather Fastness | 3-4 | Weather Fastness | 2-3 |

CHEMICAL STRUCTURE



PHYSICAL DATA

| | | |
|------------------|--------------------|-----------|
| Oil Absorption | gm/100gm | 40.0-5.0 |
| Bulk Density | Kg/Lt | 0.30-0.35 |
| Specific Gravity | Gm/cm ³ | 1.20-1.60 |
| pH | Number | 6.00-8.00 |

SOLVENT RESISTANCE (On 1-5 Grey wool scale)

| | | | | | | |
|-------|--------|------|---------------|--------|-----|-----|
| Water | Alkali | Acid | Ethyl Acetate | Xylene | MEK | IPA |
| 4 | 4 | 4 | 3 | 4 | 3 | 3 |

STANDARD PACKAGING

| | |
|-------------------|--|
| 20 Kg Plastic Bag | 42"x42" inch Wooden pallet contains 300 Kg Material. |
|-------------------|--|

DISCLAIMER: The colour panels and other information provided in the shade card are given in good faith and are to be used as a guide only. Verification under actual conditions is recommended before use.