



Ensuring Your Colour needs

ANURANG[®] Fast Red R 2105

AZO PIGMENTS FOR PAINTS AND COATINGS

PRODUCTION INFORMATION

ANURANG[®] Fast Red R 2105 is Bluish shade mid high Performance Mono Azo pigment especially designed for universal Paint applications.

PRODUCT INFORMATION

Chemical Type	Mono Azo Naphthol Red
C.I.Name	Pigment Red 210
C.I. No	12477
CAS NO	61932-63-6
EINECS /ELINCS No	220-509-3
PHYSICAL FORM	Free Flowing Powder

APPLICATION PROFILE

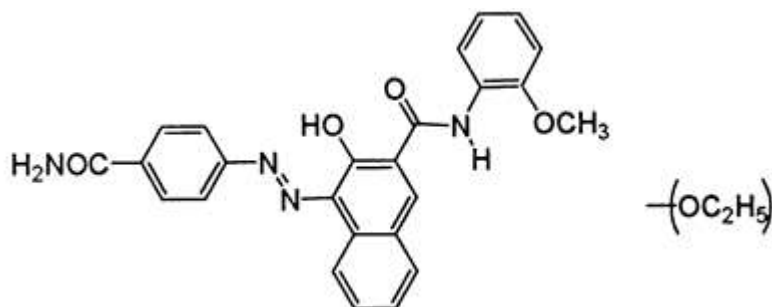
Water borne Paints	Recommended
Air Drying Alkyds	Recommended
Aqueous Pigment Emulsion	Recommended
Stoving Enamels	Recommended
Powder Coating	Recommended
Industrial Coating	Recommended
Coil Coating	Recommended

COLOURESTICES / FASTNESS PROPERTIES

TECHNICAL DATA

FULL TONE (0.2 %)		Reduction Tone (1: 20)	
L	44.29	L	70.65
C	63.39	C	33.81
H	31.25	H	08.05
a	55.69	a	33.51
b	32.98	b	6.09
Light Fastness	5-6	Light Fastness	4-5
Weather Fastness	3-4	Weather Fastness	2-3

CHEMICAL STRUCTURE



PHYSICAL DATA

Oil Absorption	gm/100gm	40.0-50.0
Bulk Density	Kg/Lt	0.30-0.35
Specific Gravity	Gm/cm ³	1.30-1.70
pH	Number	6.00-8.00

SOLVENT RESISTANCE (On 1-5 Grey wool scale)

Water	Alkali	Acid	Ethyl Acetate	Xylene	MEK	IPA
4	4	4	2	4	3	4

STANDARD PACKAGING

20 Kg Plastic Bag

42"x42" inch Wooden pallet contains 300 Kg Material.

DISCLAIMER: The colour panels and other information provided in the shade card are given in good faith and are to be used as a guide only. Verification under actual conditions is recommended before use.